

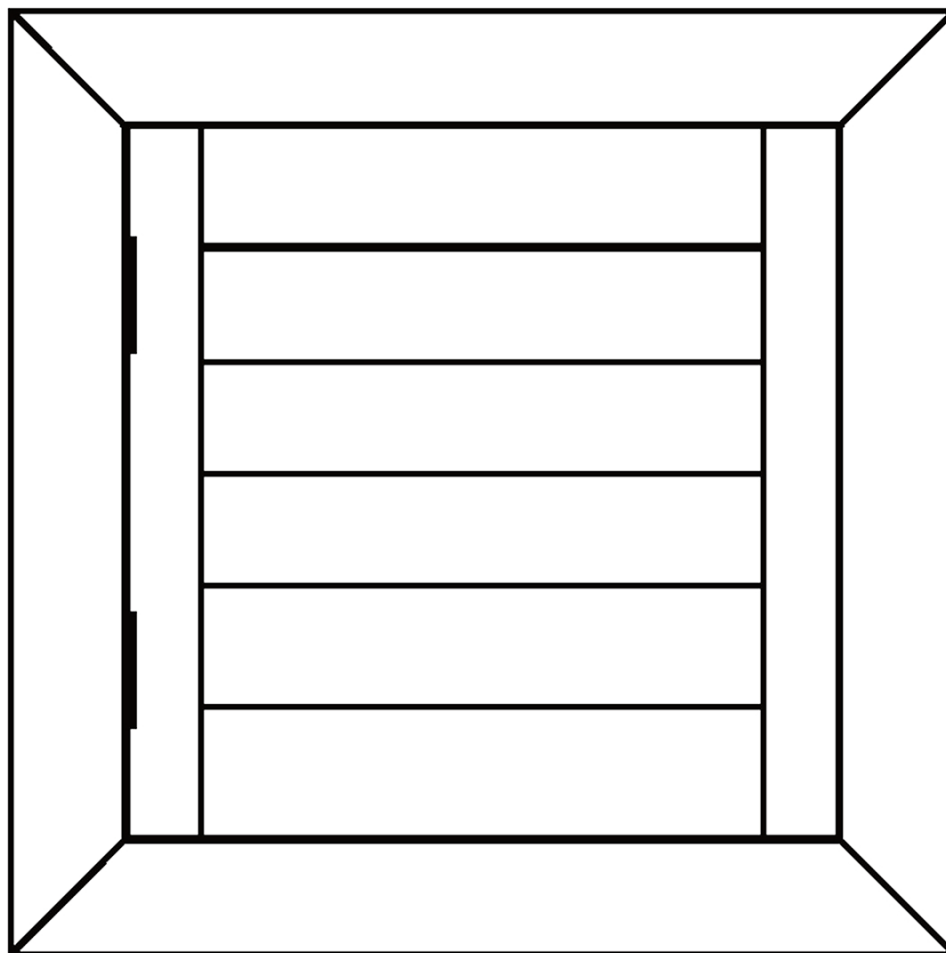
# Redi Shutter™



## Installation Instructions

Z Frame Inside Mount Single Panel

(Cannot be installed on walls with a windowsill)

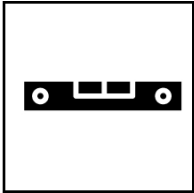


TOOLS NEEDED FOR  
INSTALLING YOUR  
SHUTTER

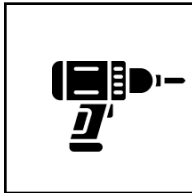
Remove the shutter from the package. Do not discard any of the packaging material until the shutter operates to your satisfaction. Check the diagram below to make sure you have the necessary parts.



Measuring  
Tape



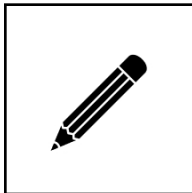
Level



Drill



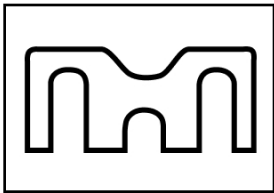
Screwdriver



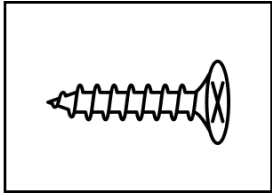
Pencil



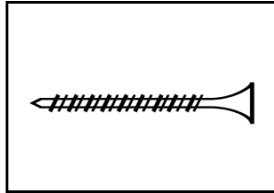
Box Knife



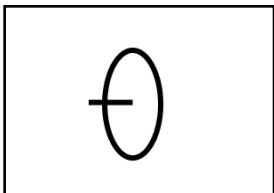
Hinge Spacers



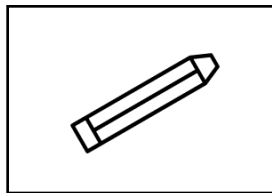
Hinge Screw



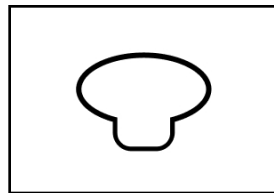
Frame Screw



Nail Glides for Shutter

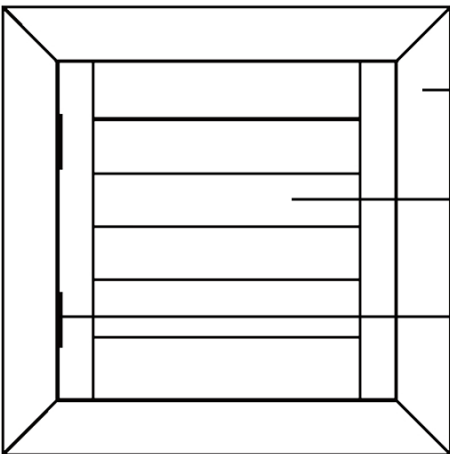


Crayon: Snow White



Hole Cap

Single Panel



Z Frame

Shutter Panel

Hings Pins

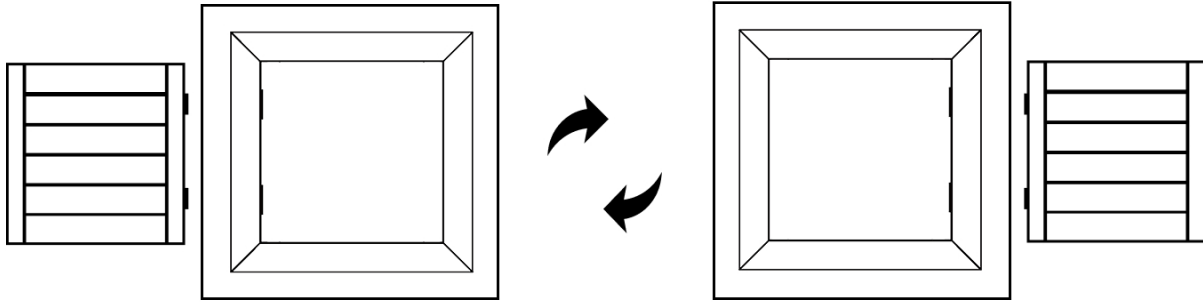
Item Number

• For All Single Panel Installations

RS 2x2	RS 2x3	RS 2x4
RS 2x5	RS 2x55	RS 2x6
RS 25x4	RS 25x25	RS 3x3
RS 3x4	RS 3x5	RS 3x55
RS 3x6		

# 01 Select Installation Orientation

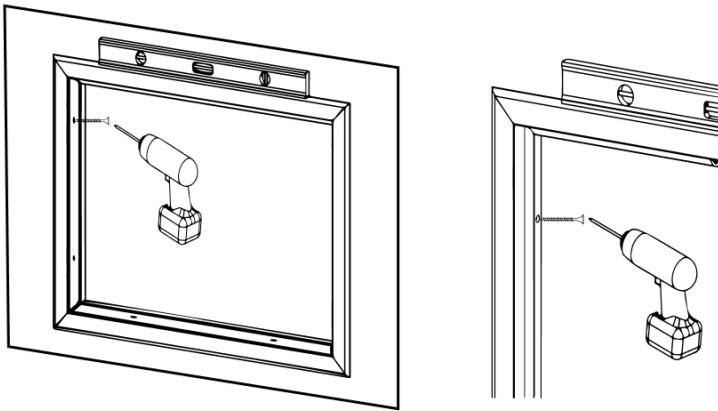
1) For Single Panel shutters, you can choose the installation direction based on your personal preference — either left-hinged or right-hinged.



**!** Determine which side you want the panel to open from before proceeding with the installation.

# 02 Level the Frame

1) The frames are pre-drilled in the top left and right frame, bottom left and right frame, and/or in the middle of each frame. Double check that all the holes are pre-drilled before placing the frame on the window.

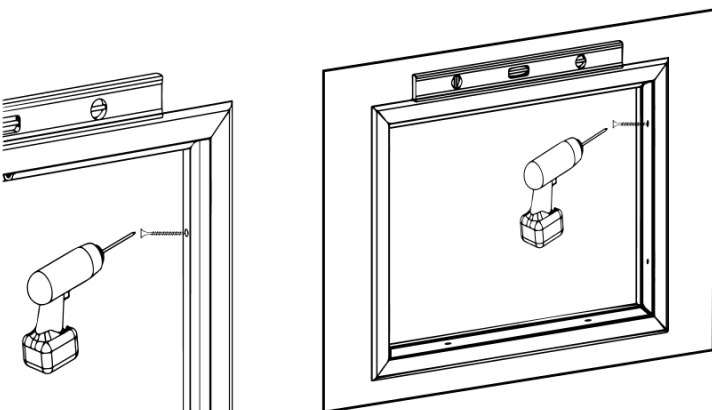


2) Position the assembled frame evenly along the window opening against the window. Then secure one screw into the upper left frame **ONLY**.

**!** Secure only one screw into the upper left corner of the frame.

**!** Place a level on top of the frame to ensure it is properly aligned with the window.

# 03 Secure the Frame



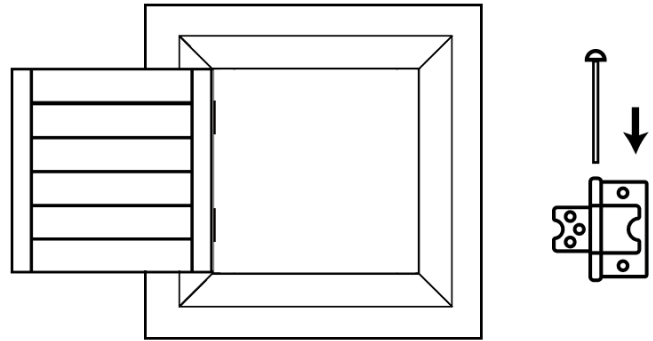
To keep the frame level, tighten one screw into the upper right frame. The shutters will be fully secured in later steps.

**!** Only secure one screw into the top right frame

**!** Place a level on top of the frame to ensure it is properly aligned with the window.

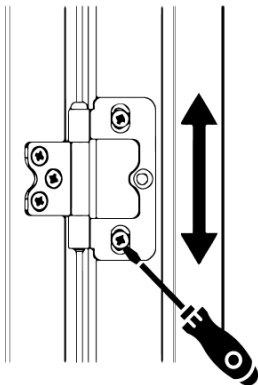
## 04 Attach the Panels

Place the shutter panel in the frame, align the hinges, and insert the hinge pin.



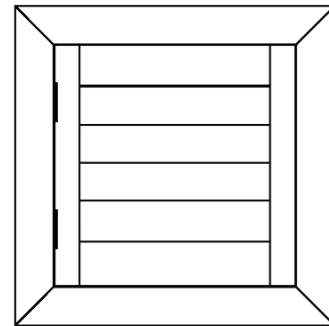
## 05 Adjust Frame Hinges (Optional)

1) If panel hinges are not aligned with frame hinges properly, then frame hinges can be adjusted.

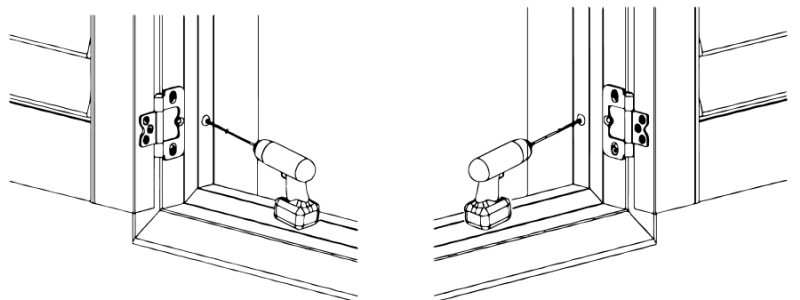


Loosen frame hinge screws, adjust frame hinges properly, tighten screws.

2) Please check the gap between panel and frame at the top and bottom. The gap should be even; if not, then shift frame left to right until the gap is even.

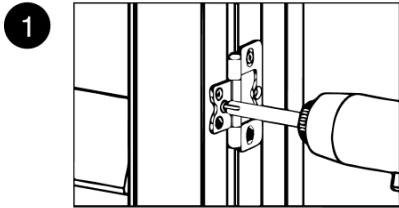
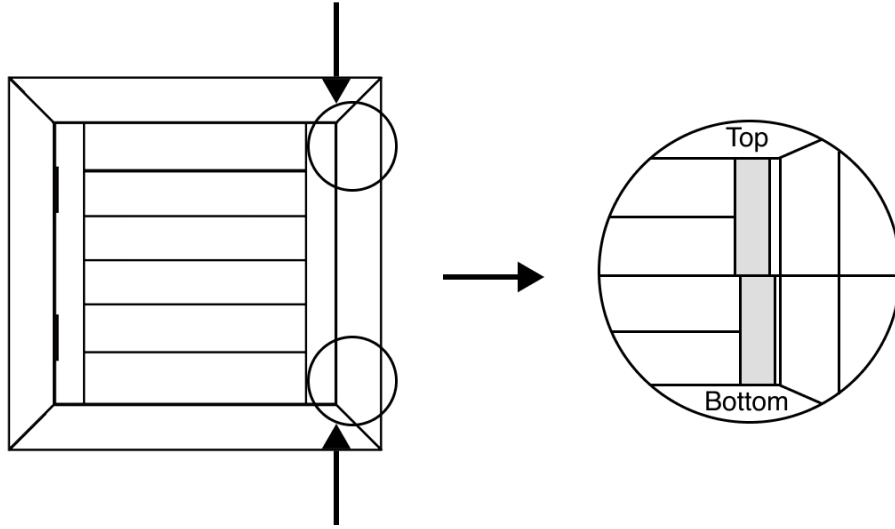


3) Once even, secure a screw at the bottom of the left frame and right frame.

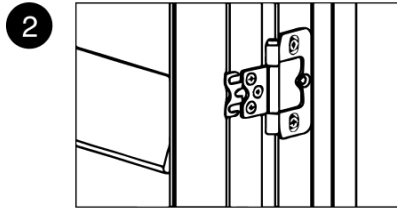


## 06 Adjust Panel Gaps if Necessary (Optional)

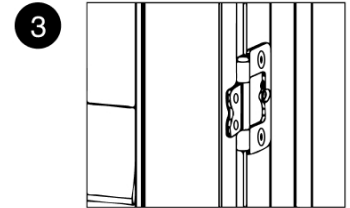
Check gap between panels and adjust accordingly with hinge spacers provided if needed.



1 Loosen hinge screws on the panel



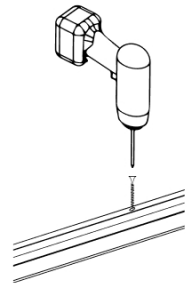
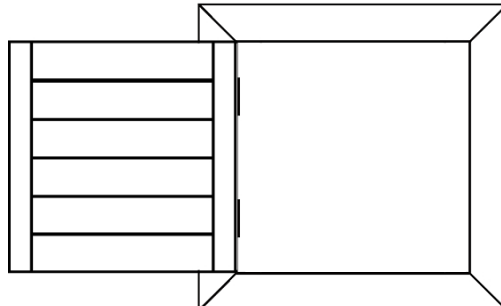
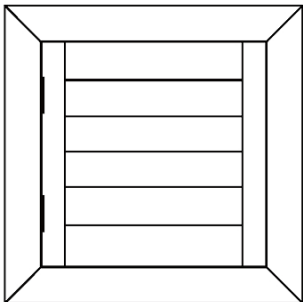
2 Insert spacer behind hinge, tighten screws



3 Spacer installed

## 07 Final Adjustments & Finishing Touches

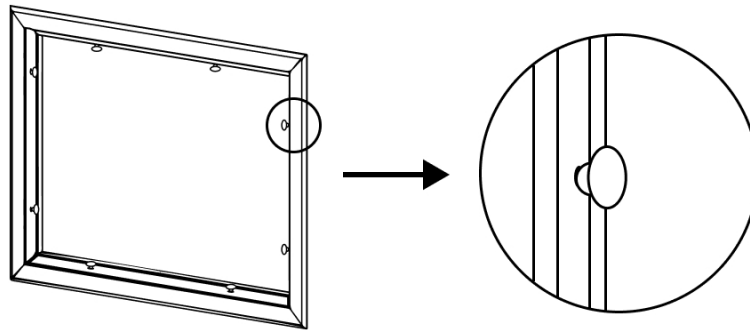
1) Open and close panels to make sure panels operate properly. Secure the frame with screws through the rest of the pre-drilled holes.



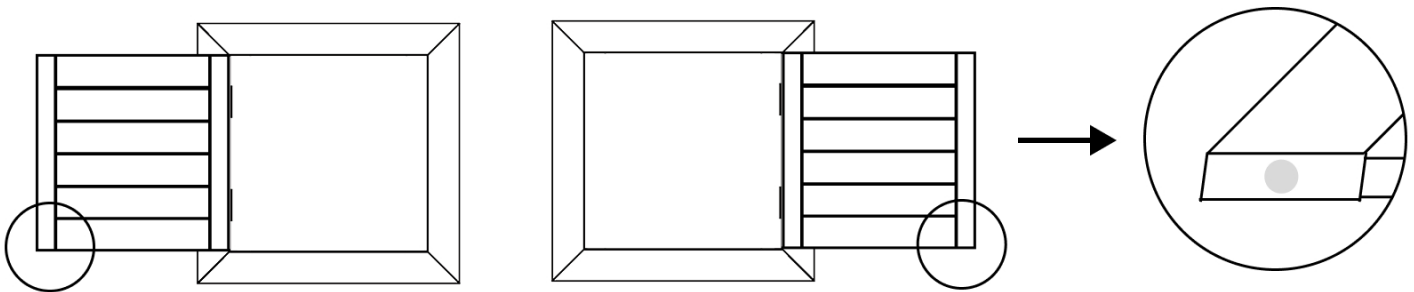
## 07 Final Adjustments & Finishing Touches (Cont...)

---

2) Install the plugs into the frame's pre-drilled plug holes to complete the look of your shutter.



3) Based on the final left or right opening direction of your single panel, install the Nail Glides for Shutter on the bottom of the panel accordingly.



 For Single Panel only



### Installation complete!

---

Now sit back, admire your work, and enjoy your perfectly installed shutters!