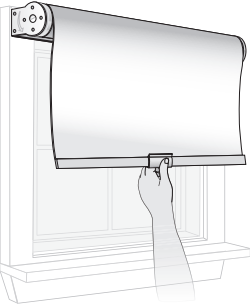


Cordless Roller Shade EXACT LIFT

operation

Lower shade:

Pull straight down on the center of the bottom bar to lower the shade to exact desired position.



Raise shade:

Push center of bottom bar up to exact desired position, then release shade.

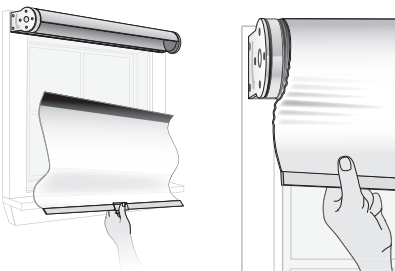
Cordless Lift Assist:

This handle can be used to raise and lower Exact Lift shades.



Improper use will lead to:

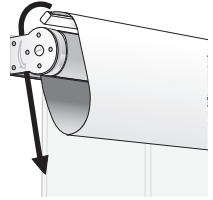
Separation of shade from roll, fraying edges or telescoping



troubleshooting

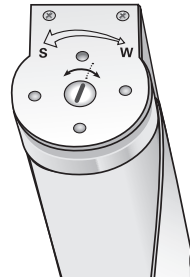
Not raising fully:

Raise shade as far as it will go, then gently wrap the bottom bar up and around the shade roll once.



Tension Control*

This is a fine adjustment control; you may need to rotate the screw several times around to make desired changes.



Tension Control; right
(Counter-clockwise for
stronger tension/speed)

Unable to raise:

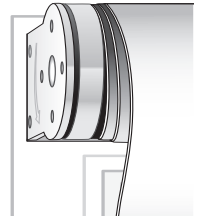
If the shade stays put rather than raising, increase the tension by turning the screw on the right end of the shade **counter-clockwise**.

Raises too far:

If the shade continues to raise after you position it, decrease the tension by turning the screw on the right end of the shade **clockwise**.

Telescoping:

If the shade is telescoping, resolve it by lowering the shade completely, and then slowly raising it completely from the center of the bottom bar. If necessary, also ensure that the shade is level.



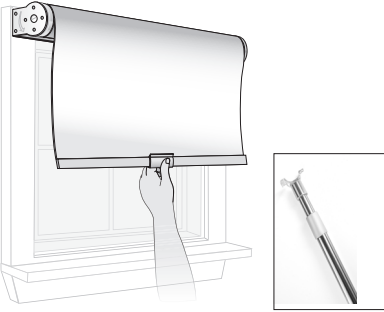
* If your shade is in a cassette, remove the right end cap to locate the tension control screw.

Cordless Roller Shade EASY LIFT

operation

Lower shade:

Pull straight down on the center of the bottom bar to lower the shade.
If desired, a Cordless Lift Assist handle can be used.

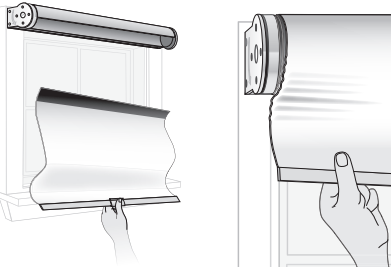


Raise shade:

Gently pull straight down and release the shade; it will raise to the upper stop limit.

Improper use will lead to:

Separation of shade from roll, fraying edges or telescoping

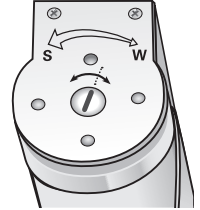


troubleshooting*

Both the tension and stop limit are fine adjustment controls; you may need to rotate the screw several times around to make desired changes.

Adjust Tension:

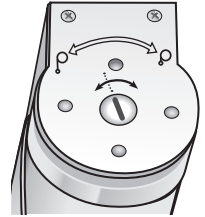
Control the shade speed by adjusting the spring tension screw on the right end. Turn **counter-clockwise** to increase the speed.



Tension Control; **right**
(Counter-clockwise for stronger tension/speed)

Change Upper Stop Limit:

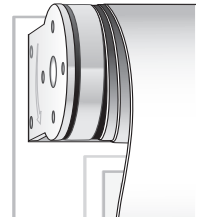
Change the upper stop limit by adjusting the screw on the left end of the shade. Turn **clockwise** to raise the upper stop limit.



Stop Limit; **left**
(Clockwise to raise limit)

Telescoping:

If the shade is telescoping, resolve it by lowering the shade completely, and then slowly raising it completely from the center of the bottom bar. If necessary, also ensure that the shade is level.



* If your shade is in a cassette, remove the end cap to locate the tension or stop limit control screw.