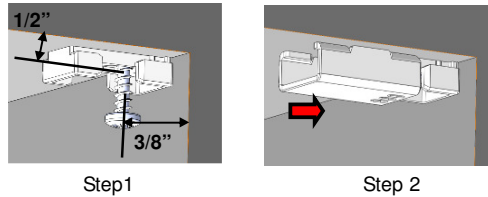


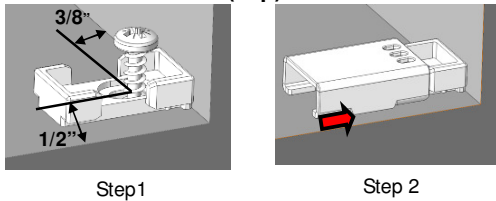
Bracket Installation

Inside Mount

- For flush mount, the minimum distance from the top/bottom wall to the center of the screw hole needs to be 1/2". And 3/8" from the side wall to the center of the screw hole.



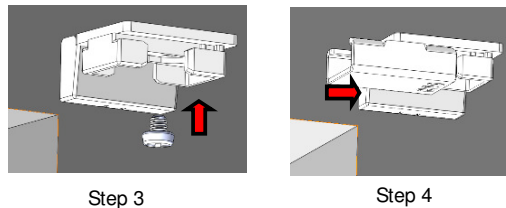
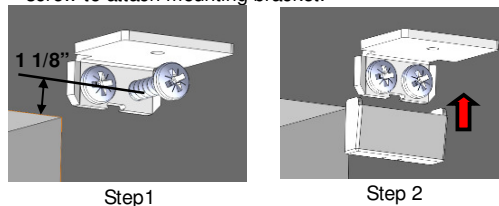
(Top)



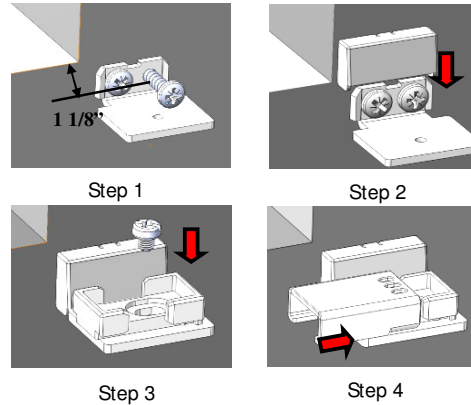
(Bottom)

Outside Mount

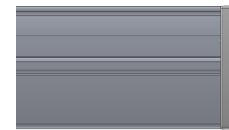
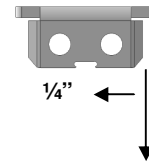
- First, keep L bracket flush with the side wall and a minimum distance of 1 1/8" from the center of the screw hole to the top/bottom window opening. Then, Use 2 M3.5x25mm screws to fasten the L bracket.
- Once the L bracket is installed, attach the cover onto it to hide the screws. Finally, use 1 M3 x 3mm screw to attach mounting bracket.



(Top)

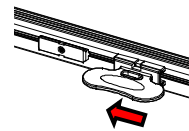


Note: See below. Align L bracket 1/4" away from the edge to outside screw hole of the L bracket.



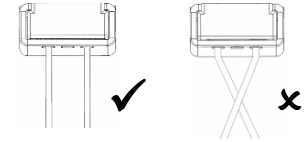
Handle Installation

- Slide the handle onto the plastic piece pre-attached to the rails.



Note

- For child safety, please check and ensure that there are no loose cords after the shade is completely installed.
- Please also make sure that cords are nice and tight and not tangled.



Cleaning

Routine cleaning will help maintain the beauty of your shade. The shade can be cleaned by using a soft brush, vacuumed with a low suction hand-held vacuum, cleaned ultrasonically (specify that a mild solution must be used and that the head rail should never be immersed in liquid), or dampen a clean cloth with a warm water and mild detergent solution to dab the spot until it's gone (do not rub!).

Getting Started



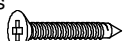
Remove the shade from the package. Save the packaging until the shade is installed and working to your satisfaction.

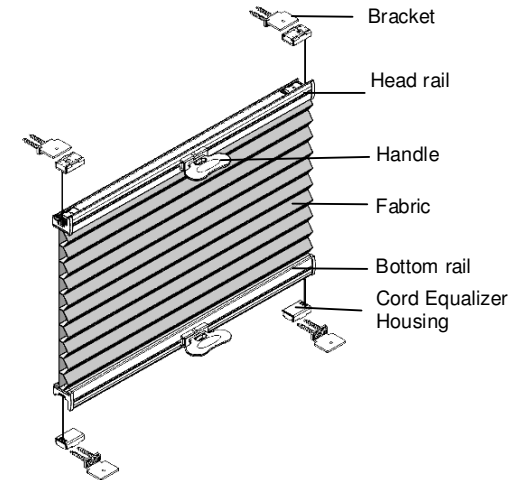
Tools Needed:

- Power drill and drill bit
- Measuring tape
- Screwdriver
- Level
- Pencil



You will need to use the following fasteners for your particular mounting surface.

Surface	Fastener
Wood	M3.5x25mm Screws (Provided) 
Drywall/Plaster	Wall Anchors, Expansion Bolts (Not Provided) 
Metal	Sheet Metal Screws (Not Provided) 



May, 2012