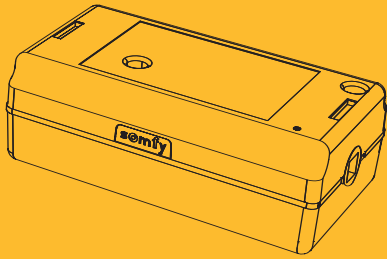


# Installation guide



## Tilt WireFree™ IR



Ref. 5055108A

HOME MOTION BY

somfy

**Argentina:** Somfy Argentina  
+54 (0) 1147 373 700

**Australia:** Somfy PTY LTD  
+61 (0) 2 9638 0744

**Austria:** Somfy GesmbH  
+43 (0) 662 62 53 08

**Belgium:** Somfy Belux  
+32 (0) 2 712 07 70

**Brasil:** Somfy Brasil STDA  
+55 11 (0) 6161 6613

**Canada:** Somfy ULC  
+1 (0) 905 564 6446

**China:** Somfy China Co. Ltd  
+86 21 (0) 6280 9660

**Cyprus:** Somfy Middle East  
+357 (0) 25 34 55 40

**Czech Republic:** Somfy Spol s.r.o.  
+420 (0) 296 372 486-7

**Denmark:** Somfy AB Denmark  
+45 (0) 65325793

**Finland:** Somfy AB Finland  
+358 (0) 957 13 02 30

**France:** Somfy France  
+33 (0) 820 374 374

**Germany:** Somfy GmbH  
+49 (0) 7472 930 0

**Greece:** Somfy Hellas  
+30 (0) 210 614 67 68

**Hong Kong:** Somfy Co. Ltd  
+852 (0) 2523 6339

**Hungary:** Somfy Kft  
+36 (0) 1814 5120

**India:** Somfy India PVT Ltd  
+91 (0) 11 51 65 91 76

**Israel:** Sisa Home Automation Ltd  
+972 (0) 3 952 55 54

**Indonesia:** Somfy Indonesia  
+62 (0) 21 719 3620

**Italy:** Somfy Italia s.r.l  
+39 (0) 024 84 71 84

**Japan:** Somfy KK  
+81-45-475-0732

**Kingdom of Saudi Arabia:**  
Somfy Saudi  
+966 (0) 1 46 02 748

**Kuwait:** Somfy Kuwait  
+965 (0) 434 89 01

**Lebanon:**  
cf. Cyprus Somfy Middle East  
+961 (0) 1 391 224

**Malaysia:** Somfy Malaysia  
+60 (0)3 228 74743

**Mexico:**  
Somfy Mexico SA de CV  
+52 (0) 55 5576 3421

**Morocco:** Somfy Maroc  
+212 (0) 22 95 11 53

**Netherlands:** Somfy BV  
+31 (0) 23 55 44 900

**Norway:** Somfy Norway  
+47 (0) 67 97 85 05

**Poland:** Somfy SP Z.O.O  
+48 (0) 22 50 95 300

**Portugal:** cf. Spain Somfy Espana SA  
+351 (0) 229 396 840

**Romania:** Somfy SRL  
+40 (0) 368 444 081

**Russia:** Somfy LLC  
+7 (0) 495 360 47 72

**Singapore:** Somfy PTE LTD  
+65 (0) 638 33 855

**Slovaquia:** cf. Czech Republic  
Somfy Spol s.r.o.  
+420 (0) 296 372 486-7

**South Korea:** Somfy JOO  
+82 (0) 2 594 4333

**Spain:** Somfy Espana SA  
+34 (0) 934 800 900

**Sweden:** Somfy AB  
+46 (0) 40 165900

**Switzerland:** Somfy A.G.  
+41 (0) 44 838 40 30

**Taiwan:** Somfy Taiwan  
+886 (0) 2 8509 8934

**Thailand:** Somfy Bangkok  
Regional Office  
+66 (0) 2714 3170

**Turkey:** Somfy Turkey  
+90 (0) 216 651 30 15

**UAE:** Somfy Gulf  
+971 (0)4 88 32 808

**United Kingdom:** Somfy LTD  
+44 (0) 113 391 3030

**United States:**  
Somfy Systems Inc  
+1 (0) 609 395 1300

- This Somfy product must be installed by a professional motorisation and home automation installer, for whom these instructions are intended.
- Before installation, check that this product is compatible with the associated equipment and accessories.
- These instructions describe how to install, commission and use this product.
- Moreover, the installer must comply with current standards and legislation in the country in which the product is being installed, and inform his customers of the operating and maintenance conditions for the product.
- Any use outside the sphere of application specified by Somfy is not approved. Such use, or any failure to comply with the instructions given herein will invalidate the warranty, And Somfy refuses to accept liability.

### INSTALLATION

#### [1]. SHAFT ADAPTATION

- Slide shaft to the far side of the headrail until is 9cm / 3.54Inches from the end.it
- If shaft does not slide 9cm / 3.54Inches from the end, mark and cut shaft to remove 9cm / 3.54Inches from the end of the headrail (use motor to measure mark).
- If needed, file the end of the shaft to remove any rough edges.

#### [2]. MOTOR MOUNTING

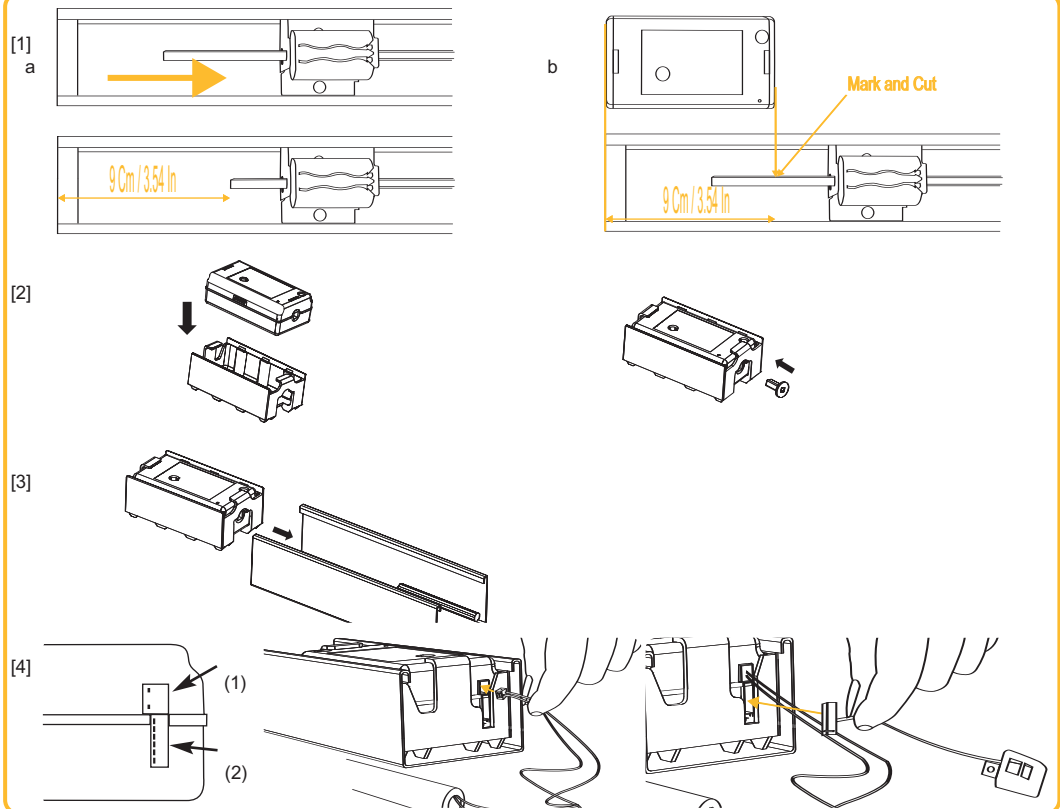
- Position the blinds to be open fully (horizontal)
- Put the motor into the appropriate headrail adaptor and secure snaps on top of motor.
- If needed, press the shaft adaptor into the motor.

#### [3]. MOTOR INTEGRATION INSIDE HEADRAIL

Slide the motor into the headrail until the shaft is fully inserted into the motor.

#### [4]. POWER SUPPLY & IR SENSOR CONNECTION

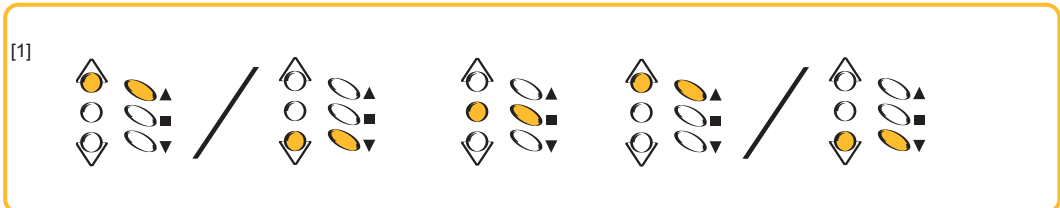
- On the back of the motor, there are two connectors. One is for the power supply (1) and the other for the IR sensor (2).
- Connect the battery to the motor.
- Connect the IR sensor to the motor using the lower terminals of the motor IR data connector.



### USER MODE

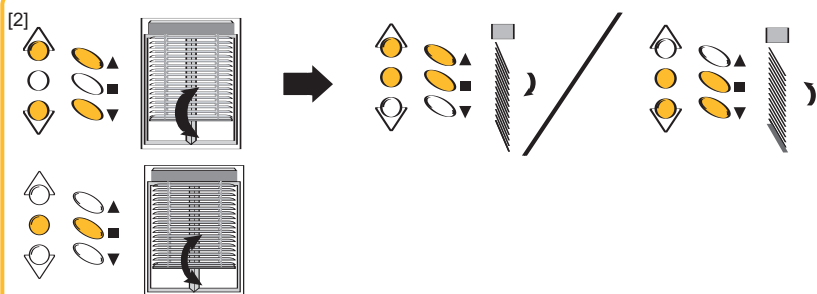
#### [1]. USER MODE

- To move the shade from one closed position to the other closed position, briefly press the UP or DOWN button.
- To stop the motor, press the MIDDLE button.
- To tilt the slats, press and hold the Up or DOWN button on the transmitter.



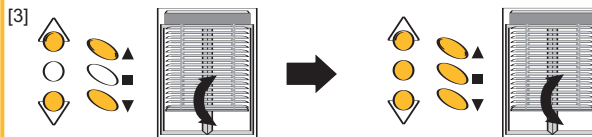
**[2]. LIGHT GAP ADJUSTMENT**

- Press the UP and DOWN buttons simultaneously until the motor jogs.
  - Press the UP and STOP or DOWN and STOP buttons until the motor jogs to adjust the gap.
  - To test the new light gap, move the shade to close position with the UP or DOWN button.
- Note: After the 3rd consecutive adjustment without testing, the amount of change factor will increase 10x.



**[3]. MOTOR DIRECTION CHANGE**

- Press the UP and DOWN buttons simultaneously until the motor jogs.
- Press the UP, STOP and DOWN buttons, to change the direction. The motor jogs.

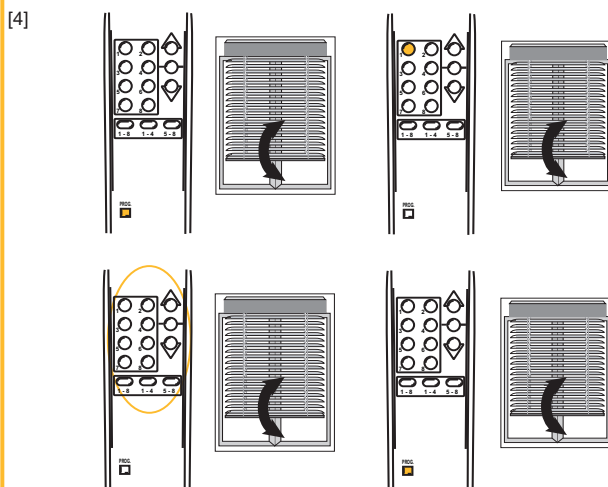


**[4]. ASSIGN A CHANNEL**

Only with the IR8 transmitter.

Note: By factory default, the motor is paired to ALL the channels on the transmitter. To designate one channel to a particular shade, the user must first delete unwanted channels (see step [5] DELETE A CHANNEL).

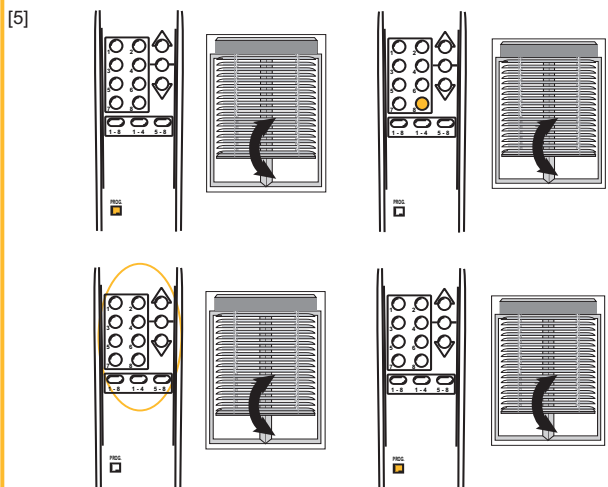
To enter in programming mode: Press on the transmitter prog button until the motor jogs.  
 To program one channel: press on key 1 and next on the key of the channel to program (1 to 8) or channel group until the motor jogs.  
 To exit programming mode: press on the transmitter prog button until the motor jogs.



**[5].DELETE A CHANNEL**

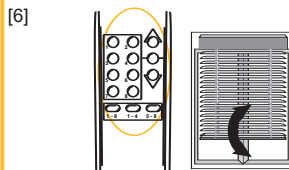
Only with the IR8 transmitter.

To enter in programming mode: Press on the transmitter prog button until the motor jogs.  
 To erase one channel: press on key 8 and next on the key of the channel to program (1 to 8) or channel group until the motor jogs.  
 To erase all channels: press on key 8 and next on key 1->8 until the motor feedback.  
 To exit programming mode: press on the transmitter prog button until the motor jogs.



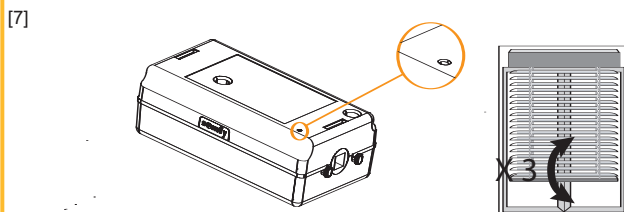
**[6].CHANNEL SELECTION**

Press 1 to 8 button. The motor jogs once the channel is paired.



**[7]. FACTORY RESET**

- Position the blinds to be open fully (horizontal)
- With the motor prog button: Press on the motor prog button until the motor jogs 3 times. The first at 2s, the second at 7s and the third at 12s.



**TROUBLE SHOOTING**

<p>The motor does not work</p> <p>Verify:</p> <ul style="list-style-type: none"> <li>The batteries of the motor or of the remote control</li> <li>The compatibility of the remote control</li> </ul>	<p>The equipment stops too soon</p> <p>Verify:</p> <ul style="list-style-type: none"> <li>The batteries of the motor</li> <li>The light gap of the motor is properly adjusted</li> </ul>
--	--