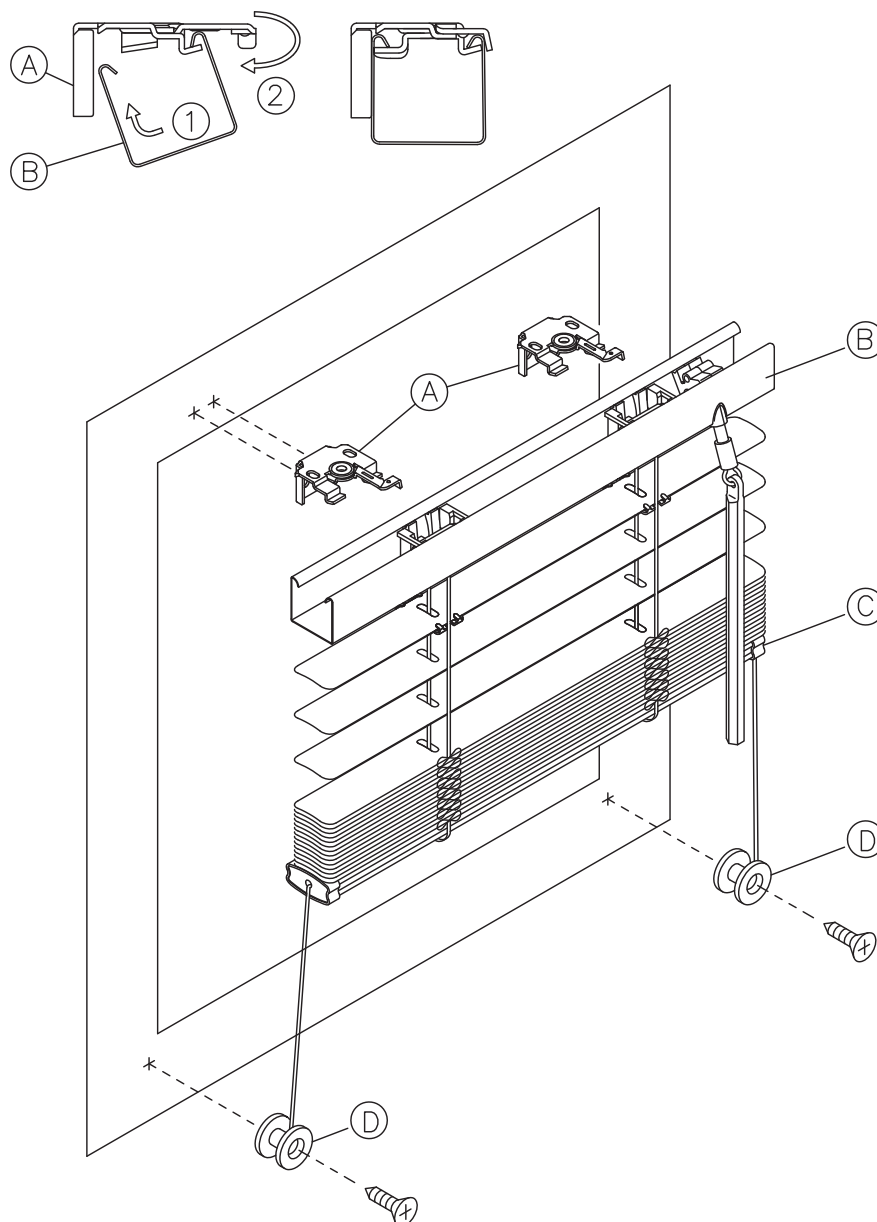


RV/Mobile Home Aluminum Mini Blind Installation Instruction

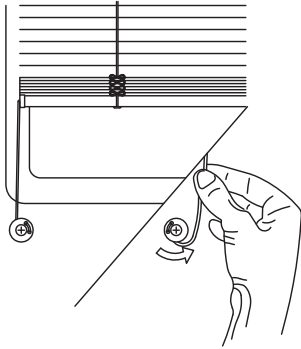


INSTALLATION:

1. Install mounting brackets (A) above top of window frame. Mounting brackets approximately 3" in from corner of window frame. Brackets needs to avoid sections of headrail with bulky hardware.
2. Make sure swivel handle is in open position. Install headrail (B) into mounting bracket.
Closed swivel handle.
3. Mount hold down brackets (cord retainer spool) (D) below bottom of the window frame.
The distance between hold down brackets are the same width of bottomrail.

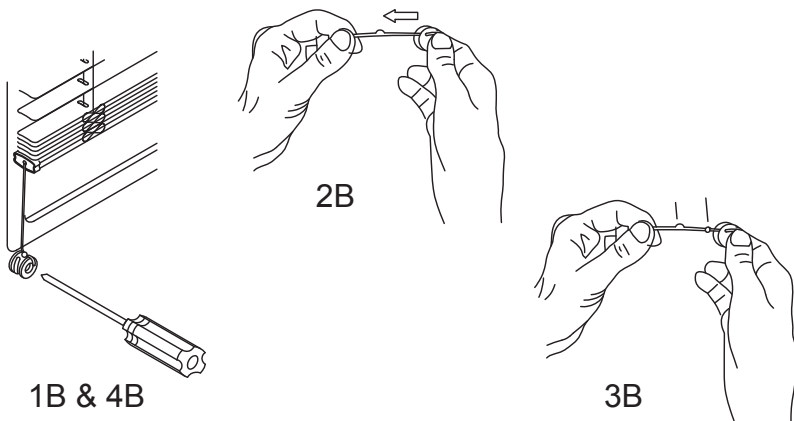
TENSION ADJUSTMENT FOR CONSTANT TENSION

TIGHTENING METHODS



Method A:

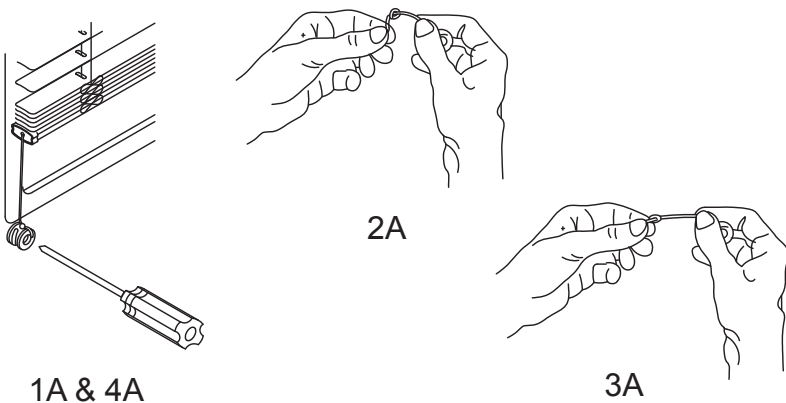
1. Wrap cord one time around each cord retainer spool.
2. Test shade for proper tension.
3. If blind is still too loose, repeat step 1.



Method B:

1. Unscrew cord retainer spool from wall on one side.
2. Slide cord retainer spool approximately 2" up the cord.
3. Tie a new knot approximately 1" from existing knot.
4. Screw cord retainer spool to the wall.
5. Repeat step 1-4 on opposite side of cord retainer spool.

LOOSENING METHODS



Method A:

1. Unscrew cord retainer spool from wall on one side.
2. Loosen knot.
3. Re-tie knot approximately 1" toward end of cord.
4. Screw cord retainer spool to the wall.
5. Repeat step 1-4 on opposite side of cord retainer spool.